

WHO'S SORRY NOW?

Music and lyrics by Ted Snyder, Bert Kalmar and Harry Ruby in 1923.

Bb	%	D7	%	G7	%	C7	%
F7	%	Bb	Fdim	F	C7	F7	%
Bb	%	D7	%	G7	%	Cm / G7	Cm
Eb	Ebm	Bb	G7	C7	F7	Bb	%

Who's sor - ry now? Who's sor - ry now?

Who's heart is ach - ing for break - ing each wov?

Who's sad and blue? Who's cry - ing, too?

Just like I cried o - ver you.

Right to the end, Just like a friend,

I tried to warn you some - how.

You had your way, now you must pay,

I'm glad that you're sor - ry now.



Who's sorry now?

Jazz Standard

Verse: C7 F7 Bb Bbo

Violine

6 F7 F+7 Bb C7 F7

12 Bb bbm F C7 F7 cm7 F7 F+7

Chorus: 18 Bb D7 G7

Who's sorry now? Who's sorry now? Whose heart is ach - ing for

24 C7 F7 Bb Ho

break - ing each vow? Who's sad and blue? Who's cry - ing too

30 F C7 F7 cm F7 Bb

Just like I cried ov - er you. Right to the end,

36 D7 G7 cm G7 cm G7

Just like a friend, I tried to warn you some - how.

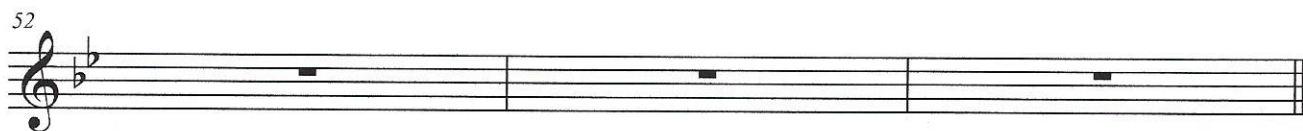
42 cm Bb G7 C7 F7

You had your way, Now you must pay; I'm glad that you're sor - ry

48 Bb Ho cm7 F7

now.

The image shows a musical score for the jazz standard 'Who's sorry now?'. It is written for a violin in 4/4 time with a key signature of two flats (Bb and Eb). The score is divided into a Verse and a Chorus. The Verse consists of 12 measures, and the Chorus consists of 36 measures. Chord progressions are indicated above the staff, and lyrics are written below the staff. The score ends with a double bar line and repeat dots.



Banjo

C7 F7 Bb Bb Bbo

F7 % Bb %

C7 F7 Bb bbm

F C7 F7 cm7 F7

Bb % D7 %

G7 % C7 %

F7 % Bb Ho

F C7 F7 cm F7

Bb % D7 %

G7 % cm G7 cm G7

cm % Bb G7

C7 F7 Bb Ho cm7 F7