

NEW ORLEANS BLUES

Jelly Roll Morton

Moderato

Measures 1-6 of the piano score. The music is in 2/4 time with a key signature of two flats (B-flat and E-flat). The first system features a dynamic marking of *ff* (fortissimo). The right hand plays a melodic line with eighth and sixteenth notes, while the left hand provides a rhythmic accompaniment with chords and single notes.

Measures 7-10 of the piano score. The dynamic marking changes to *mf* (mezzo-forte). The right hand continues with melodic patterns, including some triplet-like figures, while the left hand maintains the accompaniment with chords and moving bass lines.

Measures 11-15 of the piano score. The right hand features more complex melodic runs and chords, while the left hand continues with a steady accompaniment of chords and bass notes.

Measures 16-20 of the piano score. A dynamic marking of *f* (forte) appears in measure 18. The right hand has a more active melodic line with some grace notes, while the left hand accompaniment remains consistent.

Measures 21-25 of the piano score. The right hand continues with melodic development, including some syncopated rhythms. The left hand accompaniment provides a solid harmonic foundation.

Measures 26-30 of the piano score. The right hand features a triplet in measure 27. The piece concludes with a final melodic phrase in the right hand and a sustained chord in the left hand.

31 *mf* 8 *loco*

35

39 *ff* Stomp 8

44

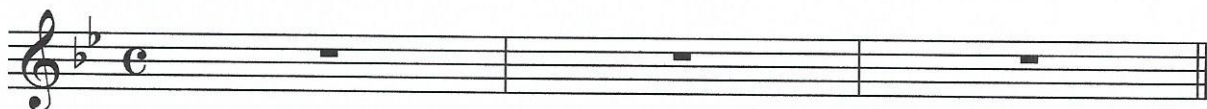
49

53 8

New Orleans Blues

Jelly Roll Morton

Trompete in C



Guitar

Intro **Bb Eb F Bb..F Bb..F**

**I: Bb % Bb7
Eb Eb7 Bb %
F7 % Bb % :I**

**I: Bb % BbBb7
Eb Eb7 Bb %
F7 % Bb % :I**

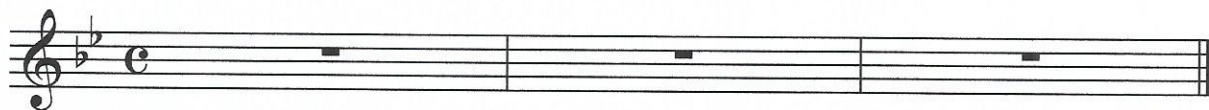
**I: Bb % Bb7
Eb..Bb Eb7 Bb..F Bb
F7 % Bb % :I**

**I: Bb Eb7 Bb Bb7
Eb Eb7 Bb %
F7 % Bb %
Bb % :I**

New Orleans Blues

Jelly Roll Morton

Trompete in C



Mandolin

Intro **Eb Ab Bb Eb..Bb Eb..Bb**

**I: Eb % Eb7
Ab Ab7 Eb %
Bb7 % Eb % :I**

**I: Eb % EbEb7
Ab Ab7 Eb %
Bb7 % Eb % :I**

**I: Eb % Eb7
Ab..Eb Ab7 Eb..Bb Eb
Bb7 % Eb % :I**

**I: Eb Ab7 Eb Eb7
Ab Ab7 Eb %
Bb7 % Eb %
Eb % :I**