

# Dark Eyes

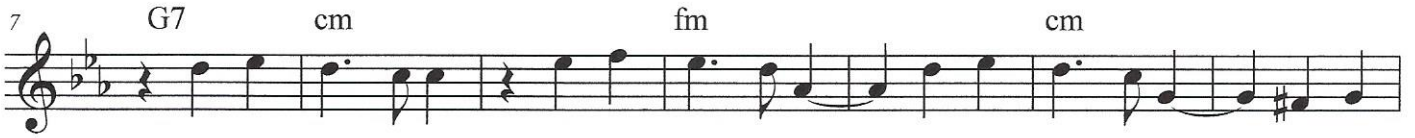
Jazz-Russian folk

Musical score for 'Dark Eyes' in 3/4 time. The score consists of six staves of music. The first staff starts with a treble clef, a key signature of one flat (Bb), and a 3/4 time signature. The melody begins with a quarter note G4, followed by quarter notes A4 and Bb4. A double bar line with repeat dots follows. The second staff continues the melody with quarter notes G4, A4, Bb4, and C5. The third staff has a quarter note G4, followed by a half note A4-Bb4. The fourth staff has a quarter note G4, followed by quarter notes A4, Bb4, and C5. The fifth staff has a quarter note G4, followed by quarter notes A4, Bb4, and C5. The sixth staff has a quarter note G4, followed by quarter notes A4, Bb4, and C5. The score includes various chords and repeat signs.

Guitar	dm	A7	%	dm	%
		A7	%	dm	%
		gm	%	dm	%
		A7	%	dm A7	dm gm dm
		C7	%	F	%
		A7	%	dm	%
		gm	%	dm	%
		A7	%	dm	%
			%		%
			%		%

# Dark Eyes

Jazz-Russian folk

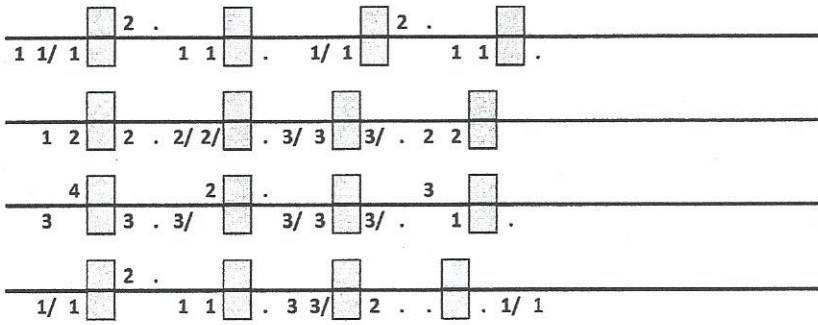


Mandolin	gm	D7	%	gm	%
		D7	%	gm	%
		cm	%	gm	%
		D7	%	gm D7	gm
		F7	%	Bb	%
		D7	%	gm	%
		cm	%	gm	%
		D7	%	gm	%

# Rattatui-Tschäss on Blues Harp

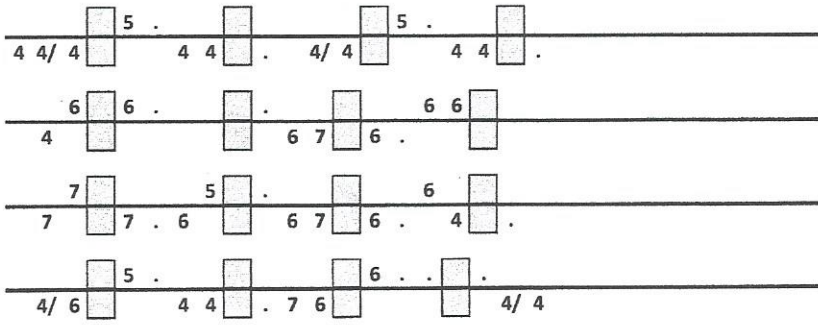
Dark Eyes (dm)

gmNdm Harp crossed



Dark Eyes (dm)

gmNdm Harp crossed



A)

dm	A7	%	dm	%
	A7	%	dm	%
	gm	%	dm	%
	A7	%	dmA7	dmgm dm

B)

C7	%	F	%
A7	%	dm	%
gm	%	dm	%
A7	%	dm	%