

# At the Jazz Band Ball

Standard

Bläser

5

10

15

20

25

30

36

44

# At the Jazz Band Ball

The Firehouse Jazz Band

17

By the Original Dixieland Jazz Band (Edwards, LaRocca, Sparbaro, Shields) - 1918  
Recorded: ODJB 1918, Bix & His Gang 1927, Eddie Condon's Chicagoans 1940, Muggsy Spanier's Ragtime Band 1939, Bobby Hackett, Bol Crosby Orch. 1938, Emperors of Jazz, Wild Bill Davison, etc.

Concert Pitch

Verse:

Musical notation for the Verse section, consisting of four staves of music in 4/4 time with a key signature of two flats. The first staff starts with a Gm chord and includes a "Bass:" box with a G2 note. The second staff has chords F7, B $\flat$ , G7, C7, and F7. The third staff starts with Gm and includes another "Bass:" box with a G2 note. The fourth staff has chords C7 and F7.

Chorus:

Musical notation for the Chorus section, consisting of four staves of music in 4/4 time with a key signature of two flats. The first staff starts with a G7 chord. The second staff has chords F7 and B $\flat$ . The third staff has chords G7 and C7. The fourth staff has chords E $\flat$ , E $\dim$ , B $\flat$ , G7, C7, F7, and a first ending box labeled "1. B $\flat$ ". The fifth staff is a second ending box labeled "2. B $\flat$ ".



# At the Jazz Band Ball

Standard

Violine

Teil A gm

5 F7 Bb G7 C7 F7

9 gm

13 C7 F7 Teil B G7

18 G7 C7 F7

23 Bb G7

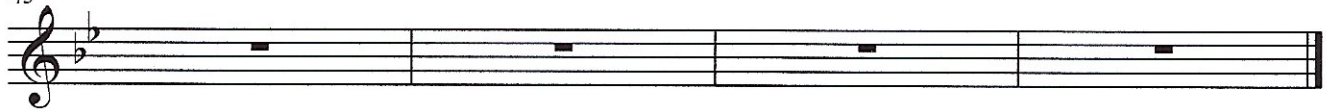
27 C7 Eb Eo Bb G7

31 C7 F7 Bb 2.

37

The image shows a musical score for a violin part. It consists of ten staves of music in 4/4 time, with a key signature of two flats (Bb and Eb). The score is divided into two sections: 'Teil A' (measures 1-12) and 'Teil B' (measures 13-30). Measure numbers 5, 9, 13, 18, 23, 27, 31, and 37 are indicated at the start of their respective staves. Chord symbols are placed above the staff at various points: F7, Bb, G7, C7, F7 (measures 5-8); gm (measures 9-12); C7, F7, G7 (measures 13-16); G7, C7, F7 (measures 18-21); Bb, G7 (measures 23-26); C7, Eb, Eo, Bb, G7 (measures 27-30); C7, F7, Bb (measures 31-33), followed by a first ending bracket and a second ending bracket labeled '2.'. The final staff (measure 37) contains a whole rest on the G4 line.

45



Guitar

<b>gm</b>	<b>%</b>	<b>%</b>	<b>%</b>
<b>F7</b>	<b>BbG7</b>	<b>C7</b>	<b>F7</b>
<b>gm</b>	<b>%</b>	<b>%</b>	<b>%</b>
<b>C7</b>	<b>%</b>	<b>%</b>	<b>F7</b>
<b>G7</b>	<b>%</b>	<b>C7</b>	<b>%</b>
<b>F7</b>	<b>%</b>	<b>Bb</b>	<b>%</b>
<b>G7</b>	<b>%</b>	<b>C7</b>	<b>%</b>
<b>EbEo</b>	<b>BbG7</b>	<b>C7F7</b>	<b>Bb</b>